

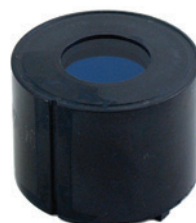


IMAGE INTENSIFIERS

With our expansive capabilities and strategic partnerships, we are able to custom build any of our NVD manufactured products with Image Intensifiers from either Elbit Systems of America®, Photonis® or L3Harris®. This includes green and white phosphor, thin or un-filmed, and 16mm or 18mm image tubes. Each Image Intensified Night Vision system is available in several different FOM ratings. The FOM, or Figure of Merit, available is variable depending on what US DOS permits for your country's buy. Please check your country's requirements with imports through US DOS.



The MX10160 type is an image intensifier available in both 16mm or 18mm. It is found in the AN/AVS-6 & 9 Aviators Night Vision Imaging Systems (ANVIS), most weapon sights, and many different goggles and monocular systems.



The MX10130 type is an 18mm image intensifier. It is used in the AN/PVS-7, B, C & D binocular series of night vision goggles along with a few weapon sights.



The MX11769 type is an image intensifier available in both 16mm or 18mm. The MX11769 is the most widely used image intensifier and is used in the AN/PVS-14 night vision monocular and several weapon sights and goggles.



Gen 3 traditional phosphor/P-43



Gen 3 white phosphor/P-45

WHITE PHOSPHOR

Traditional image intensifier tubes use a P-43 phosphor screen output, resulting in the yellow-green image that has become the signature view through most Gen III night vision technology. The White Phosphor tube uses a P-45 phosphor screen, which yields an alternate coloration closer to black and white imagery. This change in color has been reported to enhance overall object recognition while providing contrast sensitivity equivalent to green phosphor.